

BMC Control-M Workload Automation

Improve workflow automation, reduce operating costs, and deploy new services faster

PRODUCT DESCRIPTION

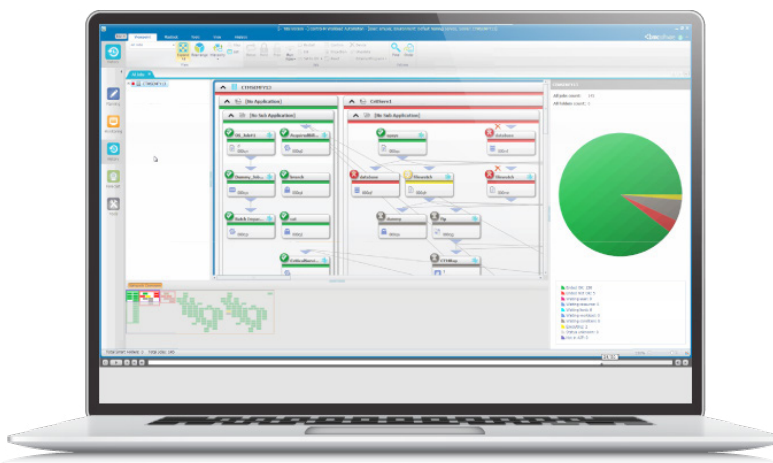
Control-M is a workload automation solution that provides unmatched application workflow automation, lowering operating costs and increasing application deployment speed. It delivers enhanced business value with high availability, enhanced analytics, and faster application deployment through automated job promotion from development to test to production for optimal bi-modal IT innovation.

BUSINESS CHALLENGE

Pressure is growing for IT organizations to deliver new services more quickly and to get systems running more reliably. Meanwhile, meeting these needs is becoming more challenging because of the many interdependencies among systems and their demands on limited resources. To keep up with demands, IT teams need to automate as much support and development work as possible.

BMC SOLUTION

Control-M, the next generation of BMC's industry leading workload automation solution, continues to improve workflow services performance, usability, and reduce operating efficiencies with **new capabilities** such as risk-reducing **high availability**, out-of-the box **predictive analytics**, **automated agent and client deployment** for faster upgrades and maintenance, and a **time-saving global calendar capability**. Control-M **significantly enhances automated application workflow promotion** through automated job promotion across environments.



Digital Enterprise Management



KEY FEATURES

Control-M enhances the industry-leading workload automation solution with reduced operating costs, improved IT system reliability, and faster workflow deployments.

- **Automated agent and client deployment** – update agents or deploy/upgrade clients in a few simple steps
- **Run time analytics** – get advanced out-of-the-box insight into all jobs at a glance
- **High availability** – Maximize production environment uptime, prevent data loss, and ensure business continuity
- **Automated Promotion** – Automated job promotion from test to production improves deployment speed and eliminates manual errors

KEY BENEFITS

- **Workflow deployment time reduced up to 80 percent** as all job definitions are modified and validated to site standards and manual tasks are reduced during the promotion process
- **Admin costs and time reduced** from months to a couple of days with automated client and agent deployment, and **save up to 50 percent administrative time** with the global calendar feature

- ◀ **Figure 1:** Control-M extends the capability of workload automation and improves development agility by automating more features, including built-in analytics and time-saving features for schedulers, developers, IT managers, and business users.

PRODUCT DETAILS

Control-M Workload Automation solution: Control-M automates and simplifies batch job creation, scheduling, and management across IT environments. It makes it easy to build and monitor workflows through a graphical interface that provides a single point of control for all enterprise batch jobs. Control-M presents a common view of all enterprise workloads and provides a single, consistent GUI to automate workflow development, scheduling, and management. Users have the control to manage any workload without requiring environment-specific expertise. Control-M also has an extensive set of modules and extensions that provide additional functionality for different activities and environments.

WHAT'S NEW?

Automated client and agent deployment capabilities: Using the automated agent and client deployment capability in Control-M, users can reduce the time previously required for manual upgrades and maintenance. With a few simple steps agents and clients can be deployed or updated from a central point of control. The deployment of agent updates can also be scheduled to a later time, increasing flexibility and reducing costs.

High availability: Control-M High Availability enables you to maximize your production environment uptime, prevent data

loss, and ensure business continuity in the event of hardware maintenance or failure. It supports automatic or manual failovers to a secondary host from a single point of control.

Automated Application Workflow Promotion: Using Workload Change Manager, you can now automate application workflow promotion between test and production environments to accelerate application change and deployment cycle times.

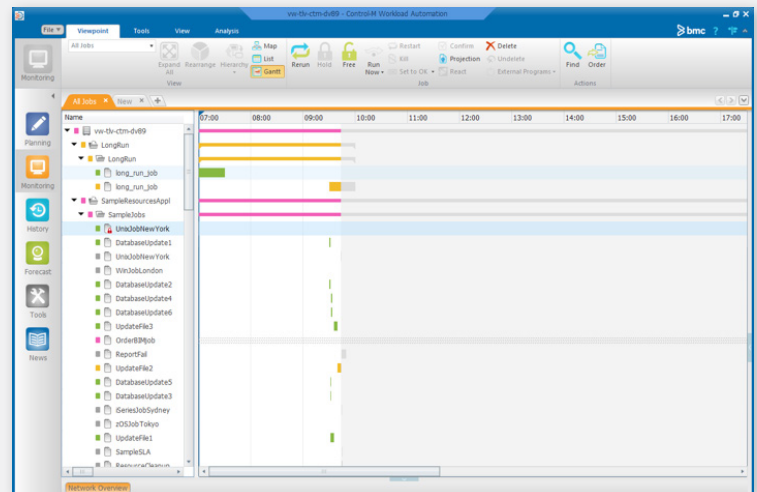
Run Time Analytics: Control-M features advanced out-of-the-box insight into all jobs across your enterprise significantly improving run time estimation with Batch Impact Manager analytics. And jobs no longer have to be defined as a part of a Batch Impact Manager service.

Usage alerts: Keep an eye on your task usage with Usage Alerts. You can define task usage alert thresholds across all of your Control-M environments and automatically receive an email alert when thresholds are reached.

FOR MORE INFORMATION

To learn more about BMC Control-M, please visit bmc.com/control-m

Figure 2: Job flows available in Gantt views for planning, monitoring, history and forecasting domains showing the best times during a day to plan for maintenance or downtime, jobs running in parallel, and with Batch Impact Manager, runtimes through the end of the day.



BMC is a global leader in innovative software solutions that enable businesses to transform into digital enterprises for the ultimate competitive advantage. Our Digital Enterprise Management solutions are designed to make digital business fast, seamless, and optimized from mainframe to mobile to cloud and beyond.

BMC – Bring IT to Life

BMC digital IT transforms 82% of the Fortune 500®.



BMC, BMC Software, the BMC logo, and the BMC Software logo, and all other BMC Software product and service names are owned by BMC Software, Inc. and are registered or pending registration in the US Patent and Trademark Office or in the trademark offices of other countries. All other trademarks belong to their respective companies. © Copyright 2016 BMC Software, Inc.

